



MB156



MB256



MB05



MB556



MB656



MBX15

### Lightweight, extremely powerful breakers

- Minimal moving parts, only two for less maintenance, better performance and less service.
- Superior valve design for operation within a broader range of pressures and flows with less heat and stress on components.
- Added steel reinforcement at lower end of housing to protect housing and power-cell.
- Side-plate bolt locking system keeps bolts from loosening.
- Supported power-cell by rubber cushions and urethane wear plates to absorb shock, vibration and reduce wear - MB556, MB656 and MBX15.
- Box style housing - MB556, MB656 and MBX15.
- Direct acting nitrogen chamber boosts the power of each hammer blow.



### MODEL SPECIFICATIONS

|                                           | Unit   | MB156     | MB256     | MB05      | MB556     | MB656     | MBX15     |
|-------------------------------------------|--------|-----------|-----------|-----------|-----------|-----------|-----------|
| Impact Energy Class                       | Ft/lbs | 175       | 350       | 550       | 750       | 870       | 1500      |
|                                           | J      | 250       | 475       | 750       | 1000      | 1200      | 2030      |
| Blows Per Minute                          | BPM    | 600-1200  | 700-1200  | 650-1550  | 590-1100  | 600-1000  | 400-800   |
| Weight (with Tool & Mounting Brkt)        | Lbs    | 173       | 493       | 480       | 752       | 872       | 1168      |
|                                           | Kg     | 79        | 224       | 218       | 340       | 396       | 531       |
| Length (with Tool & Mounting Brkt)        | In     | 42        | 51        | 53        | 63        | 66.5      | 69        |
|                                           | Mm     | 1069      | 1295      | 1350      | 1600      | 1689      | 1760      |
| Tool Working Length                       | In     | 11        | 15        | 15        | 15        | 18        | 16.6      |
|                                           | Mm     | 279       | 381       | 381       | 381       | 457       | 426       |
| Tool Diameter                             | In     | 1.75      | 2.5       | 2.6       | 2.7       | 3         | 3.3       |
|                                           | Mm     | 44        | 64        | 67        | 69        | 76        | 85        |
| Hydraulic Pressure                        | PSI    | 1800-2100 | 1400-1700 | 1500-2000 | 1600-2000 | 1700-1900 | 1885-2200 |
|                                           | BAR    | 124-144   | 96-117    | 100-140   | 110-138   | 117-131   | 130-152   |
| Flow Range                                | GPM    | 4-10      | 9-16      | 10-22     | 12-22     | 16-24     | 15-25     |
|                                           | LPM    | 15-38     | 34-60     | 38-83     | 45-83     | 60-91     | 56-95     |
| System Relief Pressure (Minimum Cracking) | PSI    | 2600      | 2600      | 2600      | 2600      | 2600      | 3000      |
|                                           | BAR    | 180       | 180       | 180       | 180       | 180       | 206       |
| Sound Power Level (LW)                    | dBA    | 116       | 122       | 125       | 124       | 121       | 126       |

Specifications and Features are Subject to Change Without Notice

### RECOMMENDED BREAKER TO CARRIER SIZE

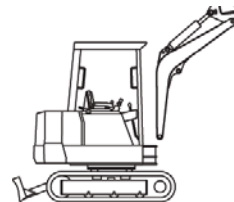
|                     | Unit | MB156     | MB256      | MB05       | MB556      | MB656      | MBX15       |
|---------------------|------|-----------|------------|------------|------------|------------|-------------|
| Skid-steer Size     | Lb   | 1500-3000 | 3000-7000  | 4500-7000  | 4500-10000 | 8000-14400 | -           |
|                     | Kg   | 681-1362  | 1362-3178  | 2045-3182  | 2043-4536  | 5448-6538  | -           |
| Mini Excavator Size | Lb   | 1900-6000 | 4000-10000 | 5000-13500 | 7000-16000 | 9000-20000 | 14000-26000 |
|                     | Kg   | 855-2700  | 1816-4500  | 2273-6075  | 3175-7200  | 4100-9000  | 6300-11800  |
| Backhoe Size        | Lb   | -         | 4000-10000 | 5000-13500 | 7000-16000 | 9000-20000 | 14000-26000 |
|                     | Kg   | -         | 1816-4500  | 2273-6075  | 3175-7200  | 4100-9000  | 6300-11800  |



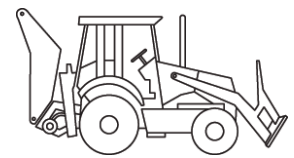
#### Using the carrier selection chart:

Choosing the right attachment is dependent upon two factors ; application and available carrier. Find your carrier weight according to this chart. Match the carrier weight to the recommended Mounted Breaker model number.

Small & Large  
Excavators



Backhoes



### MODEL ORDERING

| Model | Part No.  | Description                                                    |
|-------|-----------|----------------------------------------------------------------|
| MB156 | MB15600   | Stanley - Excavator Mount - 6" and 4" Pin Centers**            |
|       | MB15614   | Stanley - Excavator Mount - Flange Top*                        |
|       | MB1561SBN | LaBounty - Narrow Skid Steer - 11" Pin Centers**               |
|       | MB15641   | Stanley, Q-Tach for Walk Behind - 6" and 4" Pin Centers**      |
| MB256 | MB25600   | Stanley - Excavator Mount - 9" Pin Centers**                   |
|       | MB25600SS | Stanley - Skid Steer - 9" Pin Centers**                        |
|       | MB25603   | Stanley - Excavator Mount - Flange Top*                        |
|       | MB25641   | Stanley - Q-Tach for Walk Behind - 9" Pin Centers**            |
|       | MB2570    | LaBounty - Excavator Mount - 11" Pin Centers**                 |
|       | MB2570SB  | LaBounty - Cradle Skid Steer - 11" Pin Centers**               |
|       | MB2570SS  | LaBounty - 2 Position Skid Steer - 11" Pin Centers**           |
|       | MB2570XC  | LaBounty - Excavator Mount - Exchange Top                      |
|       | MB2570XCS | LaBounty - Skid Steer - Exchange Top Combo                     |
| MB05  | MB05e00   | Stanley - Excavator Mount - 9" Pin Center** and Flange Top*    |
|       | MB05s02   | Stanley - Cradle Skid Steer - 9" Pin Centers** and Flange Top* |
|       | MB05e04   | Stanley - Excavator Mount - CP027, TAG QC27 Top                |
|       | MB05s04   | Stanley - Skid Steer / CP027, TAG QC27 Combo                   |
|       | MB05e05   | Stanley - Excavator Mount - Exchange Top                       |
|       | MB05s05   | Stanley - Skid Steer - Exchange Top Combo                      |

| Model | Part No.  | Description                                              |
|-------|-----------|----------------------------------------------------------|
| MB556 | MB55600   | Stanley - Excavator Mount - Flange Top*                  |
|       | MB55600SS | Stanley - Skid Steer - Fixed 20 Degrees                  |
|       | MB55601   | Stanley - Excavator Mount - 14" Pin Centers**            |
|       | MB55607   | LaBounty - Excavator Mount - 14" Pin Centers**           |
|       | MB5570SB  | LaBounty - Skid Steer - Fixed 20 Degrees                 |
|       | MB5570XC  | LaBounty - Excavator Mount - Exchange Top                |
|       | MB5570XCS | LaBounty - Skid Steer - Exchange Top Combo               |
| MB656 | MB65603   | Stanley - Excavator Mount - Flange Top                   |
|       | MB65607   | Stanley - Excavator Mount - 14" Pin Centers**            |
|       | MB65609   | Stanley - Excavator Mount - 1/4 Yard Wain Roy, C&P, TAG  |
|       | MB6560XC  | LaBounty - Skid Steer - Exchange Top Combo               |
| MBX15 | MBX15E03  | Stanley - Excavator Mount - Flange Top*                  |
|       | MBX15E00  | Stanley - Excavator Mount - 14" Pin Centers**            |
|       | MBX15E09  | Stanley - Excavator Mount - 1/4 Yard Wain Roy - C&P, TAG |

Information information pertaining to hydraulic breaker models:

\* "Flange Top" for use with quick coupler applications requires custom fit mounting bracket (sold separately).

\*\* "Pin Centers" for direct pin to carrier boom applications, requires mounting pak (sold separately).

Most breakers come standard with a Conical Bit, except for the MB05, which has a Chisel Cross Cut Bit

OPERATIONAL ACCESSORIES - SMALL BREAKERS

| Model | Part No. | Description                         |
|-------|----------|-------------------------------------|
| MB156 | 26257    | Tool Bit, Asphalt Cutter, Cross Cut |
|       | 26259    | Tool Bit, Conical Point             |
|       | 26260    | Tool Bit, Chisel, Cross Cut         |
|       | 26261    | Tool Bit, Chisel, Line Cut          |
| MB256 | 25170    | Tool Bit, Asphalt Cutter, Cross Cut |
|       | 25171    | Tool Bit, Asphalt Cutter, Line Cut  |
|       | 27281    | Tool Bit, Conical Point             |
|       | 27282    | Tool Bit, Chisel, Cross Cut         |
|       | 27283    | Tool Bit, Chisel, Line Cut          |
|       | 27284    | Tool Bit, Blunt Point               |
| MB05  | 27286    | Tamping Pad                         |
|       | 69863    | Tool Bit, Conical Point             |
|       | 69864    | Tool Bit, Chisel, Cross Cut         |
|       | 69865    | Tool Bit, Chisel, Line Cut          |
|       | 69866    | Tool Bit, Blunt Point               |
|       | 69867    | Tamping Pad                         |
|       | 72911    | Tool Bit, Asphalt Cutter, Cross Cut |
|       | 72912    | Tool Bit, Asphalt Cutter, Line Cut  |
| MB556 | 56547    | Tool Bit, Conical Point             |
|       | 56548    | Tool Bit, Blunt Point               |
|       | 56549    | Tool Bit, Chisel, Line Cut          |
|       | 56550    | Tool Bit, Chisel, Cross Cut         |
|       | 56551    | Tamping Pad                         |
| MB656 | 28123    | Tool Bit, Conical Point             |
|       | 28124    | Tool Bit, Line Cut                  |
|       | 28125    | Tool Bit, Cross Cut                 |
|       | 28126    | Tool Bit, Blunt Point               |
|       | 18942    | Tamping Pad                         |
| MBX15 | 71623    | Tool Bit, Conical Point             |
|       | 71624    | Tool Bit, Chisel, Cross Cut         |
|       | 71625    | Tool Bit, Chisel, Line Cut          |
|       | 71726    | Tool Bit, Blunt Point               |
|       | 71627    | Tool Bit, Moil Point                |



Moil Point



Conical Point



Cross-cut Chisel



Line-cut Chisel



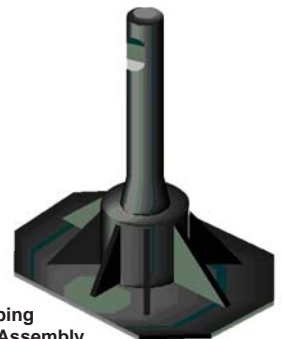
Blunt Point



Asphalt Cutter Line-cut



Asphalt Cutter Cross-cut



Tamping Pad Assembly