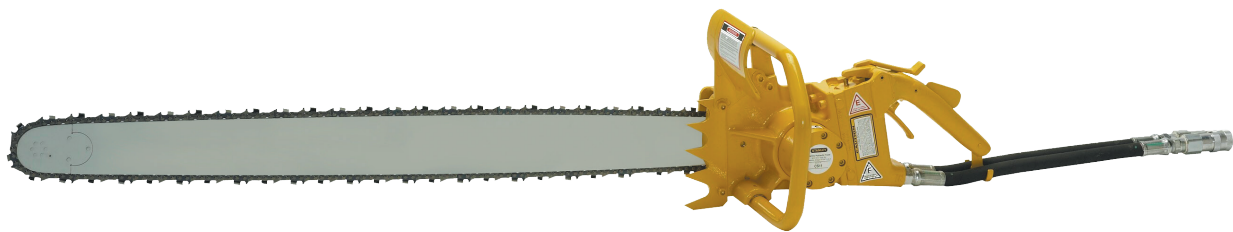


CS11 UNDERWATER CHAIN SAW

STANLEY®



The **CS11** is an extreme duty hydraulic powered chain saw for cutting all types of wood structures underwater - including bridge pilings, pier and dock timbers. It's robust design and high torque gear motor provides divers instant chain speed to cut through the toughest timbers with ease. The power to weight ratio is significantly higher than any other wood cutting chain saw and is available with bar lengths up to 42" (107 cm). Painted hi-visibility yellow.



FEATURES

- Integral Stanley Hyrevz gear motor produces high torque
- Direct drive motor – no chain coast when trigger is released
- Stainless steel spool and fasteners
- Interlocking safety trigger and hand guard
- Large assist handle
- Manual chain oiler
- Adjustable automatic chain oiler
- Bucking cleat
- Wide flow range
- Order bar and chain separately

SPECIFICATIONS

Cut Capacity	24, 32, 36 & 42" / 61, 81, 91 & 107 cm (See Ordering Information)
Chain Type	3/8" Pitch
Circuit Type	Open Center
Flow Range	10-14 gpm / 38-53 lpm
Optimum Flow	14 gpm / 53 lpm
Working Pressure	1500-2000 psi / 105-140 bar
Full Relief Setting	2250 psi / 155 bar
Motor Speed @ 12 gpm	5295 rpm
Chain Speed @ 12 gpm	2591' per min / 13,16 meters per sec
Weight (less bar/chain)	17 lbs / 7.7 kg
Length (less bar/chain)	17" / 43 cm
Width	9" / 23 cm
Hydraulic Ports	-8 SAE O-ring
Couplers	Yes
Hose Whips	Yes

CS11 UNDERWATER CHAIN SAW

STANLEY[®]

ORDERING INFORMATION

PART NUMBER

CS113N00 Chain Saw, Underwater, Couplers, No Bar & Chain Order Bar and Chain Separately Below

ACCESSORIES

03974 Flush-Face Coupling Set, ½" NPT

06830 Hose Whip 18" long, -8 SAE x ½" NPT

72947* 24"/61 cm Sprocket Nose Saw Bar

72951* 24"/61 cm Saw Chain

72948* 32"/76 cm Sprocket Nose Saw Bar

72952* 32"/76 cm Saw Chain

72949* 36"/91 cm Sprocket Nose Saw Bar

72953* 36"/91 cm Saw Chain

72950* 42"/107 cm Sprocket Nose Saw Bar

72954* 42"/107 cm Saw Chain

31848 Dual Hose, 50' x ½", with couplers

31972 Dual Hose, 25' x ½", with couplers

58633 Twinned Hose, 25' x ½", with couplers

58634 Twinned Hose, 50' x ½", with couplers

72960 Stud Kit

When hydraulic hose exceeds 100' (30.4 m) in length, increase I.D. of both pressure and return hose. For more information, consult Stanley Hydraulic Tools.

**Indicates new bars and chains with different stud size. If you are purchasing a new bar on an old saw it will require a new stud kit (part 72960). S/N 053112001 and up.*

IMPORTANT

To fill out a Product Warranty Recording form and for information on your warranty visit stanleyhydraulics.com and select the Warranty tab.

Note: *The warranty recording form must be submitted to validate the warranty.*