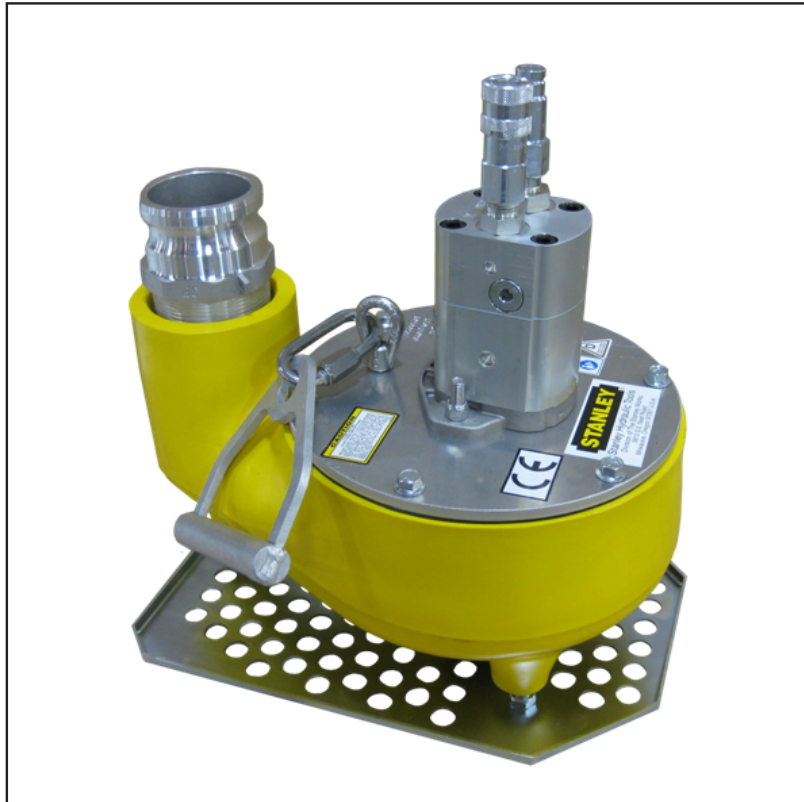


TP03 TRASH PUMP

June 2014



Features and Benefits

The Stanley TP03 Trash Pump is the lightest, most efficient way to move large volumes of liquid with concentrations of solids up to 25% by volume.

No priming necessary, just drop it into the material and it's ready for work.

The urethane bowl is virtually indestructible tough, lightweight, abrasion resistant, resilient and impervious to petrochemical solvents. The TP03 can pump almost anything without damaging the bowl.

The TP03's efficient design places the urethane impeller above material flow, reducing blockage, jamming and overall pump wear while keeping liquids moving fast enough to pump high volumes of solids at a much higher head than non-submersible pumps.

The new TP03 design includes an easy to use carrying handle that attaches to the eyelet on the top plate. The handle can be removed by unlocking the quick link connector. In addition the new Stanley yellow color improves visibility in the murkiest of liquids.

The TP03 can run dry without damaging motor or impeller, reducing the possibility of downtime.

It handles solids up to 3 inches at very high volumes to quickly and efficiently empty sumps,, vaults, septic systems, trenches, etc.

SPECIFICATIONS

Item	U.S.A.	Metric
Capacity	3 in. Discharge	
Performance	450 gpm	1688 lpm
Flow Range	7 - 9 gpm	26 - 34 lpm
Pressure	2000 psi	140 bar
Ports	-12 and -14 SAE O-Ring	
Weight	31 lbs	14 kg
Length	14 in.	35.5 cm
Connection	HTMA Flush Face Couplers	
Discharge Connection	3 in. Female Pipe Thread	
Hose Whips	No	

TP03 TRASH PUMP

June 2014

ORDERING INFORMATION

Model / Part No.	Description
TP0300301	3 in. Capacity, Urethane Bowl, CE

Accessories	Description
52720	Coupler, 3 in. Male NPT/3 in. Male Camlock
73576	Carrying Handle
73577	Quick Link Connector

WARRANTY

Stanley Hydraulic Tools and their associated parts are warranted against defects in materials and workmanship for a period of twelve months from the date of purchase. Stanley Hydraulic Tools reserves the right to repair or replace only those parts which prove to have been defective at the time of purchase. This warranty becomes void if maximum flow and pressure ratings are exceeded.

All Stanley Hydraulic Tools, parts, accessories and allied equipment are subject to design improvements, specifications and price changes at any time without notice and with no obligation to units already sold. Weights, dimensions and operating specifications listed herein are subject to change without notice. Where specifications are critical to your applications, please consult Stanley Hydraulic Tools.