

# OPERATING INSTRUCTIONS

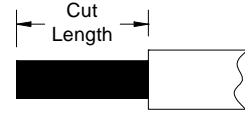


**Design &  
Manufacturing Ltd.**



## DUCT ROD FITTINGS

### INSTALLATION

Duct Rod Size	57100 Splice Connectors	57130 Female Rod End	57135 Male Rod End	57140 Swivel Connector	 Rod jacket cut-back
1/8"	57100-000	N/A	57135-000	N/A	1/2"
3/16"	57100-001	N/A	57135-001	N/A	1/2"
1/4"	57100-003	57130-003	57135-003	57140-003	1"
5/16"	57100-005	57130-005	57135-005	57140-005	1"
3/8"	57100-004	57130-004	57135-004	57140-004	1-1/4"
7/16"	57100-006	57130-006	57135-006	57140-006	1-1/4"
1/2"	57100-007	57130-007	57135-007	57140-007	1-1/4"

- DCD recommends the **screwed attachment** of these accessories to the Duct Rod. However, gluing them in the traditional manner is also acceptable. In tests, the screwed attachment yields about 20% better holding over the glued connection and is much quicker to install with no drying time required.
- In either case, the polypropylene jacket of the Duct Rod must be carefully cut back to expose a length of fiberglass core. That length is indicated in the table above. Care must be taken during this operation not to cut into the fiberglass core or it will become weakened at that point.
- For making attachments to either the 1/8" or 3/16" rod where screwed attachments are not available, or if the glue method is preferred, use Loctite Glue (DCD p/n 57170-008).
- It is possible and acceptable to use both the glue and the screw attachment.

## DUCT ROD ACCESSORIES

### INSTALLATION

If either a **Deluxe Duct Rodder** or if an **Accessory Kit** for a Standard Duct Rodder is purchased, the extra accessories are supplied in an easily attached cloth bag.

A listing of those accessories is shown below.

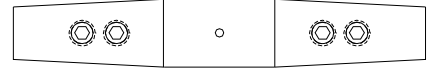
Accessory Kit Item	57000-000 For 1/8" Rod	57000-001 For 3/16" Rod	57000-003 For 1/4" Rod	57000-005 For 5/16" Rod	57000-004 For 3/8" Rod	57000-006 For 7/16" Rod	57000-007 For 1/2" Rod
Splice Connector	57100-000	57100-001	57100-003	57100-005	57100-004	57100-006	57100-007
Pulling Eye	57120-000	57120-001	57120-002	57120-002	57120-004	57120-004	57120-004
Flex. Guide Head	57110-001	57110-001	57110-002	57110-002	57110-004	57110-004	57110-004
Roller Guide	N/a	57150-001	57150-002	57150-002	57150-004	57150-004	57150-004
Clevis End	N/a	N/a	57160-002	57160-002	57160-004	57160-004	57160-004
Glue	57170-008	57170-008	57170-008	57170-008	57170-008	57170-008	57170-008
Gripper	57170-006	57170-006	57170-006	57170-006	57170-006	57170-006	57170-006
Male Rod End	57135-000	57135-001	N/a	N/a	N/a	N/a	N/a

# DUCT ROD ACCESSORIES

## ACCESSORY USAGE

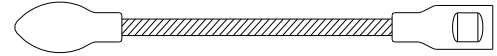
### Splice Connector:

These parts are used in the event the Rod breaks. If this happens, the ends must be cut square and then prepared as shown in INSTALLATION on this sheet. The user should beware that the rod will not bend as well with a Splice connector in place due to the unbending nature of the connector itself.



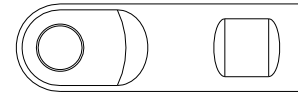
### Flexible Guide Heads:

These parts are used for leading the rod around tight bends. The three larger sizes are Stainless Steel and Aluminum while the smaller sizes are Brass. The connecting section is wire rope allowing the heads to flex.



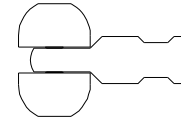
### Pulling Eyes:

These parts are used for tying wire or pull tape to the end of the rod or may also be used as a leader. They attached directly onto the Rod end supplied with the rodder.



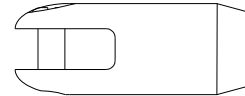
### Roller Guides:

These parts allow the pushing of a rodder through conduit with cable already in place. The rollers prevent the rod from wedging itself under the existing cable. They attached directly onto the Rod end supplied with the rodder.



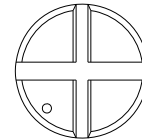
### Clevis ends:

These parts are also used for tying wire or pull tape to the end of the rod and sometimes will negate the need to use a shackle. They attached directly onto the Rod end supplied with the rodder.



### Gripper:

This part is simply to enable a better grip on the rod when pulling back through the duct. Often the rod gets wet and slippery inside the duct and is difficult to grip – this part allows a much stronger grip when pulling back.



## OPTIONAL ACCESSORIES

### Sonde Adaptor:

These are used to attach a Sonde unit onto the end of a Duct Rod. They are available in different sizes and in either solid or flexible styles.

DCD always recommends that if there is no flexible portion in the Sonde unit itself, then a Flexible adaptor should be used. Without any flexibility in the total length, it will be difficult to go around any kind of bend in the conduit.

